

*godrej* interio



# AIRCON

Care for your chair

## **Welcome to the world of Godrej Interio!**

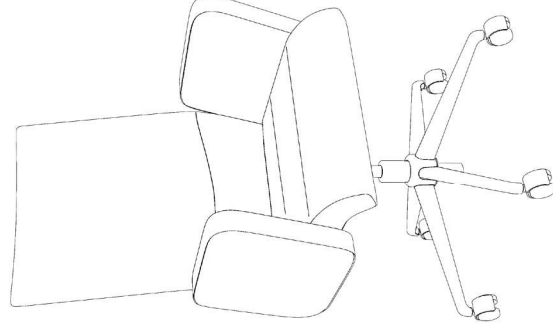
Congratulations on buying a Godrej Interio Product. We take great pleasure in bringing you this chair, keeping in view current trends and your needs.

Your product has been made with utmost care to deliver the best performance.

However, in order to enhance the performance and life of your precious furniture, it is recommended that the following care is taken during usage.

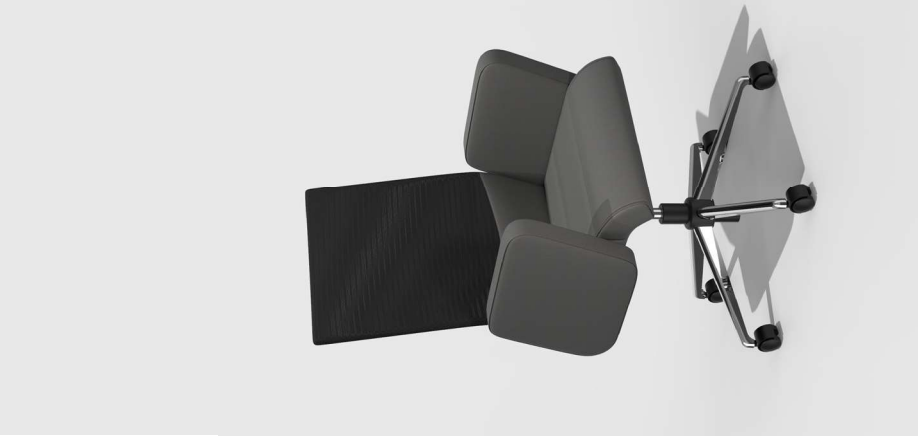
## **Contents**

<b>General Upholstery Care Instructions</b>	4
<b>Care of Leatherette</b>	5
<b>Care of Microfiber</b>	6
<b>Care of Mesh Fabric</b>	7
<b>Care of Chrome Pedestal</b>	8
<b>Care of Castors</b>	9
<b>Care of Plastic Parts</b>	10
<b>Mechanism</b>	11
<b>Terms &amp; Conditions</b>	12
<b>The Warranty Does Not Apply To</b>	13
<b>Instructions for the Customers</b>	14
<b>Warranty Voids if</b>	15
<b>Warranty Seal</b>	16



## General Upholstery Care Instructions

- It is advisable to pre-test any cleaning solution on your upholstery for color loss and fabric compatibility.
- The pre-test can be done on a small patch in a corner of the chair. Protect from the sun. Ultraviolet light can cause deterioration.
- Keep pets off the furniture. Pet's body oils rub off and are very difficult to remove. When large areas must be cleaned, it is recommended that a professional cleaning firm is employed.
- It is important that one carefully protects the upholstery of the chair against sharp objects or objects with sharp edges to prevent tearing of the upholstery.
- To prevent the formation of mold and fungus natural and synthetic surfaces should be stored at room temperature and a humidity of 40 -60%. Ensure adequate air circulation is also maintained.



## Caring for Leatherette

### Regular cleaning

Vacuum or dust frequently with a clean and dry cloth.

### Removing stains

- Wipe spills immediately, dampen the stain using a cotton cloth soaked in warm water. Use a diluted mix of soap and water to help remove tough stains. Post cleaning wipe the surface using a dry cloth ensuring the surface is completely dry.
- For stains due to liquors, wine, tea, drinks, milk or coffee use a dry cloth to remove matter that has not been absorbed. Dampen the stain with warm water and rub gently with soap solution. Post cleaning wipe the surface using a dry cloth ensuring the surface is completely dry.

## Caring for Microfiber

### Regular cleaning

Dust with a clean dry cloth or vacuum the surface for routine cleaning.

### Removing stains

- When spot cleaning microfiber, use a soft damp cloth to rub in a circular motion. Let the surface dry naturally, then brush with soft bristles to lift the microfibers and restore the original feel of the microfiber fabric.
- To avoid creating a spot, clean the area in a circular motion from the outside in. After cleaning, let the fabric air dry.



## Caring for Mesh Fabric

### Regular cleaning

For everyday cleaning use a vacuum cleaner or a cloth to dust the surface.

### Removing stains

- If some soiling does occur, use a mild detergent (10%) and water solution. Support the surface with a clean towel on the back, and gently apply the cleaning solution. Use gently circular motions. Once clean, remove any residue with clean water and a clean towel (still supporting the surface) and clean with a cloth.
- Do not use a heavy bristle brush as this may damage the fabric.
- Do not use excessive heat while cleaning.

## Taking care of Chrome Pedestal

### Do's

- Surfaces to be regularly cleaned and dusted to extend the life of the product. The surface can be cleaned with a soft moist cloth and a neutral soap followed by a dry cloth to wipe it completely dry.
- Occasionally and for removing stubborn marks and stains, chrome polish should be applied. The polish should be then wiped out with a clean towel after burnishing.



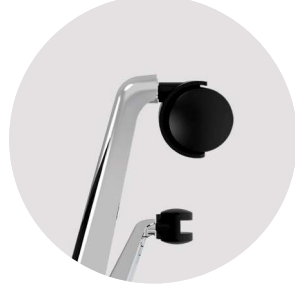
### Don'ts

- Do not leave the soap residue unclean.
- Avoid prolonged water contact as water along with corrosive substances may damage parts of the product.
- Avoid exposure of furniture to damp conditions to prevent deterioration of furniture quality.
- Do not use abrasive cleaners as these tend to scratch or dull metal surfaces. For chrome surfaces, vinegar, nail varnish remover, nitro-based thinners, petrol, should never be used for cleaning.

## Taking care of Castors

### Do's

- With the right lubrication, inspection and repair castors, can last a long time.
- Keep floor clean in order to avoid dirt or debris from getting stuck in your castors.
- Clean castors regularly using a soft bristle brush and a cloth to pull dirt out.
- Use oil or silicon spray to keep the castors well-oiled and smooth.



### Don'ts

- Avoid use of any abrasive solvents or cleaners.
- Avoid prolonged water contact as water along with corrosive substances may damage parts of the product.

## Taking care of Plastic Parts

- Do's**
- Surfaces to be regularly cleaned and dusted to extend the life of the product.
  - Wash plastic surfaces with a soft cloth soaked in mild detergent and warm water. Rinse thoroughly and dry with a clean soft cloth.



**Don'ts**

- Avoid hard scrubbing.
- Do not use solvents or abrasive kitchen cleaners, they tend to scratch or damage the surface.
- Do not use steel or wool or scouring pads to clean.

## Mechanism

**How to use**

Mechanism – The Aircon chair uses Centre Tilt Mechanism in which the seat and back are fixed together and the whole structure moves together in one direction.

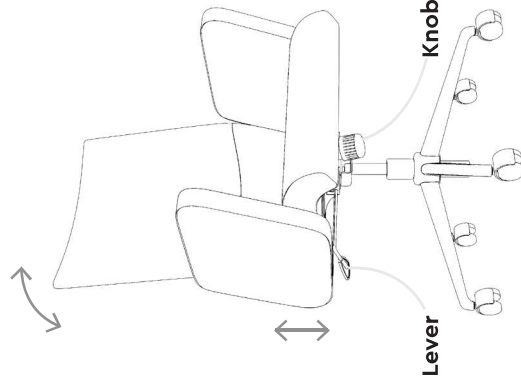
**Lever** is used for seat height adjustment and is operated by lifting up

When pulled out the chair can rock backwards and forwards. When pushed in upright back position it locks the rocking motion. It's called upright lock.

**Knob** is a rotary knob operated in clockwise or anti clockwise direction to control the tilt tension of the back which determines how easy or difficult it is to rock.

**Maintenance**

To maintain the product and ensure longevity we recommend getting it serviced once a year.



## Terms & Conditions

1. The warranty is confined to the first purchaser only and is non-transferable.
2. In case of any manufacturing defect occurring during the Warranty Period in the Product's frame and mechanism, the defective part of the Product will be repaired or replaced by Godrej & Boyce Manufacturing Company Limited ("Godrej") in a reasonable period of time at Godrej's discretion. Godrej's decision in terms of damage found shall be final and binding and Godrej shall hold the final right to decide the applicability of the warranty terms, including the decision to repair / replace the relevant part of the Product will be at Godrej's discretion based on the report submitted by Godrej's service representative.
3. Godrej shall endeavor to service the Product under the Warranty Period. However, keeping in view Godrej's internal policy to offer the latest and the best, the Product range may keep varying with the introduction of new and varied models. Any model of the Product that has been discontinued will be repaired/rectified by Godrej at its sole discretion depending upon availability of required spares.
4. The customer is informed that after the devised repairs/rectification and/or alteration, if any, to mitigate the problem the Product may be subject to change in appearance compared to the Product as originally purchased.
5. Should a defect arise that cannot be repaired during maintenance – Do not continue to use the product in order to avoid further damage to the Product & the customer. We recommend regular servicing & use as per User Manual.
6. The Warranty Period on the replaced or repaired Product shall be reduced to the balance period, as computed from the date of first sale of the Product. Spares replaced on a chargeable basis will carry a warranty for three months from the date of replacement, whereas for spares replaced FOC, the warranty ceases with the original warranty period of the Full Product.
7. The warranty is valid for the original location of the Product. If the Product is shifted to another location without the knowledge of Interio, then it is null and void.
8. Product features, specifications and warranty terms are subject to change without notice.
9. Claims, if any, arising from the warranty, will be restricted to courts within the Mumbai Jurisdiction only and will be subject to the laws of India.

## The Warranty Does Not Apply To

1. Any customizations made by the customer, including changes in size, or if any Unauthorized persons carry out any repair work.
2. Scratches, dents, stains, wrinkles, color-fading, wearning/ beading of fabric/leather, upholstery tears, flattening of nap, pilling, shrinking, heavy soiling of fabric/leather including other changes developed due to normal wear and tear of the Product during usage.
3. Any damage resulting from accidents, mishandling, negligence, misuse, heat, improper usage, any act of god, abuse, any external agent like water / acid, etc. coming in contact with the Product, or any damage due to shifting, transportation, delivery of the Product from one place to another.
4. Any fabric that may be part of the Product (including stains, tears, soiling or burns or if the Product is infested with vermin) (if applicable).
5. Comfort preference: Mismatch in the actual comfort and the preferred comfort.
6. Product if found to be in unsanitary condition, which includes if: 1) an inspector is unable to conduct an appropriate inspection of the condition of the Product without being exposed to potentially dangerous bodily fluids, blood-borne pathogens, or other substances that cause significant injury; or 2) otherwise suggest that the Product has been subject to misuse well beyond ordinary wear and tear.
7. If it is found by Godrej, that the Product is not operated according to instruction given in Product Care Booklet.
8. This Warranty stands void, if the Product is used for commercial purpose or in public places or in offices and institutions.

## Instructions for customers

1. This Warranty will be invalid unless the Product is purchased from a Godrej store or Godrej authorized dealer. The Warranty must be signed & stamped by the dealer and must be produced along with the original bill at the time of any claim.
2. The Product should include the original label which shall serve as a means of identification of the Product to confirm the warranty.
3. Notification of claims under this limited warranty or other inquiries shall be directed to the dealer from whom the Product was originally purchased or the nearest authorized Godrej & Boyce Service Centre. Please inform them regarding the details of the defect, model details and serial no (if any) of the Product.
4. The transportation cost will be charged to you and any cost incurred towards complaint attendance is also to be borne by you.

## Warranty Voids If

1. The Warranty Card is not completed properly at the time of purchase.
2. The completed Warranty Card is not presented to the authorized personnel at the time of service of the Product.

**ANY AND ALL IMPLIED WARRANTIES ON THESE PRODUCTS, INCLUDING ANY IMPLIED WARRANTY OF MERCHANTABILITY OR FITNESS FOR A PARTICULAR PURPOSE SHALL NOT EXCEED IN DURATION THE TERM OF THIS LIMITED WARRANTY, WHICH BEGINS WITH THE DATE OF PURCHASE BY YOU. THE SERVICE TERMS STATED IN THIS WARRANTY SHALL BE YOUR SOLE AND EXCLUSIVE REMEDY IN THE EVENT OF PRODUCT FAILURE DURING THE WARRANTY PERIOD. GODREJ SHALL NOT BE LIABLE FOR INCIDENTAL OR CONSEQUENTIAL DAMAGES ARISING OUT OF THE USE OF THIS PRODUCT OR INABILITY TO USE THIS PRODUCT, OR FOR THE BREACH OF THIS OR ANY OTHER EXPRESS OR IMPLIED WARRANTY. GODREJ DOES NOT WARRANT THAT THIS PRODUCT IS SUITABLE FOR ANY PERSON'S MEDICAL CONDITION. GODREJ MAKES NO WARRANTY BEYOND WHAT IS CONTAINED IN WRITING. GODREJ DOES NOT AUTHORIZE ANY PERSON TO CREATE FOR IT ANY OTHER OBLIGATION OR LIABILITY IN CONNECTION WITH THIS WARRANTY.**